

POTEAU DAILY NEWS

Complete Sports 6-8

- 3 Education
- 4 Opinions
- 5 Comics
- 6 Classifieds

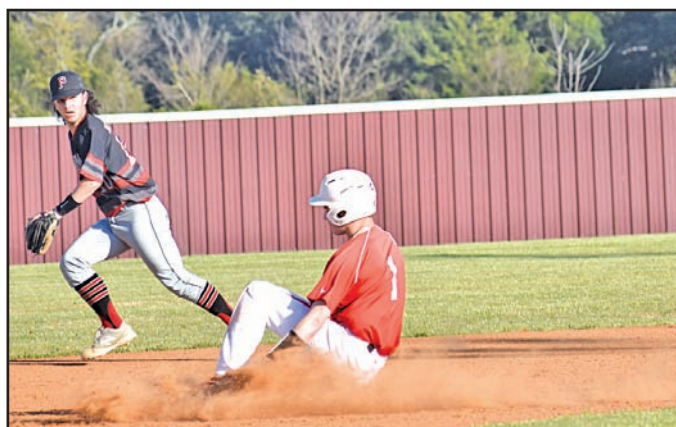


Weather

Showers Likely
East Wind
5 mph
High 73
Forecast Page 3



Poteau baserunner Jagger Dill, right, steals second base against Panama during Tuesday's winner's-bracket semifinal game in the 2019 LeFlore County Tournament in Pocola. See story, Page 7.



75¢ Daily Edition

Volume 123 No. 203 8 Pages

Moving Pets for Safety's Sake



Three Girls Animal Rescue has much to celebrate and much to be thankful for when it comes to funding their passion — saving pets. Founder and director Angela Meek, co-founder Mitzi Burkhardt, and volunteer Betty Brinker, along with several of the rescued pets are getting ready for the big weekend rummage sale and the next date to transport the animals. PDN photo by Dianna F. Dandridge-Rystrom

Benefit rummage sale set for weekend

By Dianna F. Dandridge-Rystrom
PDN Reporter

It's not a shelter. It's not a pound. The 3 Girls Animal Rescue is simply that — a rescue for pets that are bound for euthanasia, rescued from area pounds, destined to be taken to other parts of the country with strictly enforced spay/neuter laws. Director Angela Meek said they have much to be thankful for between grants they have been awarded and support from volun-

teers and donors, they were able to rescue and re-home 693 pets last year. Previously, the Watershed Foundation awarded the organization a grant that paid the lease on their building for two years. In the coming weeks they will receive a \$10,000 grant from Petco, that will be used for vetting the animals as necessary before they can be taken to other shelters. "All of the animals we pull from the area pounds are in foster homes. A few days before the animals are ready to be taken

elsewhere they are brought into our facility and re-evaluated and vet checked, so we know they are what we say they are," Meek said. Meek said the organization makes about two trips per month, normally to shelters in areas where the enforced spay and neuter laws work to curb the number of unwanted pets. She said they do work with local residents who want to adopt, but she wants the public to understand they are not a shelter, they

(See RESCUE, page 2)

Ollie's marks 90 years of serving area

Today, Ollie's Lumber is known throughout the area as the primo place for building contractors or the do-it-yourself home improvement consumer. Six generations of family working together have developed this iconic, 90-year-old LeFlore County business. Focused on providing people with quality building products and friendly customer service, the business is operating stronger than ever and still growing. Ollie's Lumber is currently operated by multiple family members; fourth generation, Sub

(Grady Jr.) & Judy Ollie, fifth generation — Brenda Ollie & Brent Brown, and sixth generation Zane Ollie Chunn. Working together, the family continues to keep Ollie's Lumber a household name for building supplies in the LeFlore County area. Ollie's Lumber is your one stop shopping center for the do-it-yourselfer and

Related Photo on Page 2

(See OLLIE'S, page 2)

Two-day women's conference slated

By Ken Milam
PDN News Editor

"In the Potter's Hands," a two-day Christian women's conference, will take place May 31 and June 1 at Heavener Runestone Park. Special speakers and guests will include The Rev. Shirley Hess, Shepherd's Heart Praises and Worship Team featuring Kristin Ward, and special guest artist Dani Montoya

of Yellow Cottage Studio. The event will be hosted by "the altar" church and The Way Women's Ministry. Registration will be \$25 for May 31, and include services at 10 a.m. and 7 p.m. and lunch. June 1 registration will be \$15 and include a 10 a.m. service. For tickets or information, call Ami Helm at (918) 839-2243 or mail P.O. Box 591, Heavener, OK 74937.

KTC plans bicentennial field trip

Botanist's journey through area celebrated

By Dianna F. Dandridge-Rystrom
PDN Reporter

Two hundred years ago, an English-born botanist made his way up the Mississippi River through the Arkansas River and up to the Poteau River, sketching, drawing and detailing the land, the rivers and the plants along the way. This year the Kiamichi Technology Center invites history buffs and nature enthusiasts alike to participate in the bicentennial field trip celebrating the life and work of Thomas Nuttall. The field trip will be April 27 from 8:30 a.m. to 5 p.m. and will include



(See NUTTALL, page 2)

Prairie mounds dot a native hay meadow along Highway 112

Warrant issued for violent offender violation

By Ken Milam
PDN News Editor

Authorities were searching for convicted felon for allegedly failing to register as a violent offender. Odell Austin Nichols, 35, was convicted of assault and battery with a dangerous weapon in Bryan County in 2017, and had been living in Poteau, according to LeFlore County District Court records. Poteau Police Officer Gary Ford said he received a letter from the Oklahoma Department of Corrections in February saying Nichols was considered in violation of the Mary Rippey Violent Crime Offenders Registration Act.

(See NICHOLS, page 2)

OLLIE'S

residential or commercial contractors. Throughout the 90-year endeavor, one thing has stayed consistent, the loyalty of the people Ollie's Lumber is proud to call customers.

Continuing into the sixth generation, along with a strong work ethic, the Ollie family prides itself in giving back and supporting our local community. The history of this 90-year-old iconic building center business began as a back-packing sales expedition of one man and his son. A true story of the American dream.

The founder of the organization, Sine Ollie, immigrated into the U.S. near the turn of the 20th century aboard a ship, while his son, George stowed away in the cargo hold at age 12 without the Father's knowledge. Upon arrival, Sine continued on to Fort Smith, Ark., where he had a sponsor to allow him to immigrate into the U.S. In order to fund his trip, Sine sold various merchandise and sundries along the way. Sine was eventually financially able to fund George to relocate in the Eastern Oklahoma and Western Arkansas area.

The father-son duo worked long hours sell-

ing general merchandise from a horse and wagon before opening their first store in Calhoun. So, began their journey that has brought them through 90 years of transitions from a general store to a major local contracting building center. Interestingly, Sub goes back through his memories and recalls how a customer owed the initial Ollie duo money and paid them with a sawmill in Calhoun in the late 1920s, hence the introduction into the lumber industry. Shortly before World War II, the family added a planing mill and another saw mill in Panama.

George Ollie married and raised five children, four boys and one girl, who all contributed to the growth of Ollie's Lumber Company. "When World War II broke out, all the boys volunteered for the U.S. Army to defend our country. The youngest son did not qualify for the Army, so he went to work in the Seattle shipyards," Sub said.

The end of the World War II saw many changes for the Ollie family. LeFlore County was growing as was the Ollie family, prompting the opening of Ollie's Lumber stores



Employees of Ollie's Lumber and hardware are more like family than employees. Employees are always willing to help out with the joists needed for new construction or the lumber for renovations.

in Spiro, Stigler, Pocola along with the Poteau and Panama locations. Due to industry modernization and other capabilities to deliver lumber and materials within a wider radius, Ollie's chose to consolidate some of their satellite stores into the two LeFlore County stores they oper-

ate today in Poteau and Pocola. These stores now efficiently service the area that once took five Ollie's Stores to supply with ease and efficiency and the best customer service as the previous 90 years.

"It's been a good business," Sub said. "We've been proud to help the

people in the area with their building needs." Sub has built a stellar reputation within the local community and surrounding areas based on integrity and customer relationships. Sub prides himself on friendly customer service, which he insists every Ollie's Lumber

employee exhibits. Sub has watched this community grow over the last 80 years, and is excited to help the next generations work with the communities to continue to make this area a flourishing place for families to build a great life, one board at a time.



Steve Patterson leads tour participants through a restored patch of tallgrass prairie

NUTTALL

many of the same locations used by the Nuttall as he explored the area. Cost is \$50 and senior discounts are available. A box lunch and bus transportation will be provided.

"This is really exciting. It was 200 years ago that Nuttall made this trip. It was at least 10 years before the Choctaw were moved in to the area. We have Nuttall's journal so we will be able to compare what the landscape looks like today with what he saw," instructor Steve Patterson, said.

"Nuttall was the first scientist to leave scientific writing about the area," Patterson said. "This is an excellent opportunity for anyone who is interested in the history or the science of the area to get an idea of what it was like, where we are going with it an what it will be like in the next 200 years."

Patterson said the tour will include a stop at Ben Geren Park in Fort Smith, Ark., where a ranger will talk about the tall prairie grass restoration that is going on.

The tour will also include a stop along some natural grass hay meadows and stops along Sugarloaf Mountain, close to where Nuttall made many of his journal entries.

"This is a field trip that offers something for nearly everyone. It's historical value reach anyone who enjoys learning about the history of our area. The science, the botany that Nuttall used was just incredible," Patterson said.

For more information or to register go to bis.ktc.edu.

RESUE

don't take in dogs, as a general rule.

"Ideally, all pet owners would have their pets spayed and neutered so there weren't all the unwanted pets and then have their pets microchipped, so they can be returned if they get lost. Until then, we are working to give

these dogs and cats a chance to find a forever home," she said.

As Meek talks about the rescue work, she is surrounded by several smiling faces of pit-bull and pit-bull crosses. "It's not breed specific. There are too many pits. There are too many chihuahuas.

There are too many that people get and don't take responsibility for."

In the coming weeks, Meek and her group of volunteers will be working with the ASPCA to help transport more animals to non-kill shelters. She has also been in contact with Oklahoma

Humane out of Oklahoma City about bringing a spay van to the area to offer low-cost spays to area residents.

"We are trying to help the public. We are hoping the new mayor will get behind us and see the difference we are making, and help work toward mandatory spay and neuter laws," Meek said.

Because 3 Girls Pet Rescues survives on donations, Meek and the other volunteers are busy preparing for an indoor/outdoor rummage sale for this weekend.

"We'll have some kids clothes, but mainly household items, knick-knacks and stuff," she said.

The rummage sale will be at the facility in Shady Point from 8 a.m. to 3 p.m. Saturday and Sunday.

NICHOLS

Ford said he tried to contact Nichols this week at an address on Beeler Street, which he had listed as his residence in December, but was told he had been evicted in February. One person said he might be living with family in

the Smithville area.

Ford said he also called an emergency phone number Nichols had listed, but a voice mail went unanswered.

An arrest warrant was issued for Nichols on Tuesday.

CALENDAR

TODAY IS HUG A NEWSPERSON DAY

- **APRIL 6** — Rummage sale to benefit 3 Girls Animal Rescue, 8 a.m. to 3 p.m., 28871 N. Side Lane, Shady Point.
 - LeFlore County Democrat Precinct and County Conventions, 1 p.m., Patrick Lynch Public Library meeting room, Poteau. Info: (918) 647-6476.
 - Sign Language II, 9 a.m. to 1 p.m., Kiamichi Technology Center. Info: Nina Morgan, (918) 647-5418, or Danielle Matthews, (918) 647-5439.
 - Fancy Easter Cookies, 9 a.m. to 1 p.m., Kiamichi Technology Center. Info: Nina Morgan, (918) 647-5418, or Danielle Matthews, (918) 647-5439.
- **APRIL 7** — Blood drive, 1-4:30 p.m., Disabled American Veterans headquarters north of Poteau on U.S. Highway 59.
 - Rummage sale to benefit 3 Girls Animal Rescue, 8 a.m. to 3 p.m., 28871 N. Side Lane, Shady Point.
- **APRIL 8** — Container Gardening, 6-30-9:30 p.m., Kiamichi Technology Center. Info: Nina Morgan, (918) 647-5418, or Danielle Matthews, (918) 647-5439.
- **APRIL 9** — Wellness for Working Women (and Men). Free class on meal prep and more, 6 p.m., Imaging Center of Eastern Oklahoma, 101 Parker Ave.
 - Poteau High School production of "The Tempest," 7 p.m., Bob Lee Kidd Civic Center.
- **APRIL 10** — Cookin' with the C's Chili Cookoff, 11 a.m. to 2 p.m., Poteau Chamber of Commerce.
- **APRIL 11** — Poteau High School production of "The Tempest," 7 p.m., Bob Lee Kidd Civic Center.
- **APRIL 12** — Poteau High School production of "The Tempest," 7 p.m., Bob Lee Kidd Civic Center.
- **APRIL 13** — A Night to Remember formal dance for persons with disabilities, 5-8 p.m., Donald W. Reynolds Community Center.
 - Poteau High School production of "The Tempest," 7 p.m., Bob Lee Kidd Civic Center.
- **APRIL 9** — Disabled American Veterans meeting: potluck 6 p.m., meeting 7 p.m., DAV headquarters north of Poteau on U.S. Highway 59.
- **APRIL 13** — A Night to Remember formal dance for persons with disabilities, 5-8 p.m., Donald W. Reynolds Community Center. Deadline to register, April 6. Info: Tanna Weaver, (918) 658-

FIRE SALE HUGE DISCOUNTS\$ EVERYTHING IN STORE

Refrigerators, Freezers, Dishwashers, Dryers, Push Mowers, Riding Mowers, Zero-Turn Mowers (residential & commercial), Tillers, Generators, with products from:

STIHL • POULAN PRO • SNAPPER • FERRIS • BRIGGS & STRATTON

APRIL 4TH – 6TH

THURS & FRIDAY 9AM – 4PM, SATURDAY 9AM – 2PM
CASH OR CHECK ONLY



Western Auto

(918) 647-3144 • 312 DEWEY AVE. DOWNTOWN POTEAU